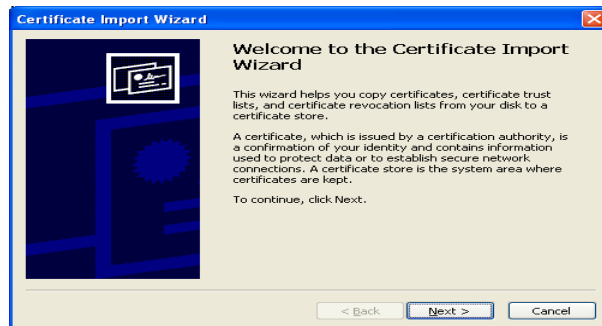


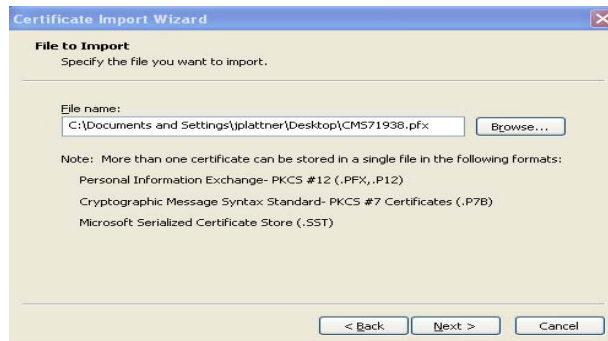
Tradeport live login instructions:

Please make sure you have your new account email from CMS in front of you.

1. Find the certification file that was included in your New Account email. This file is a .pfx file.
 - a. Download the Certification (.pfx file) to your computer and remember where you saved the file.
 - b. Find the saved file on your computer, double click on the file and you will bring up the Import wizard. Use the instructions below to import the Certification on to your computer.
 - i. Click Next



- ii. Click Next



- iii. Your cert is NOT password protected so leave it blank. You need to make sure that you mark the key as exportable. Check the box and then click Next.



- iv. Make sure that the circle that says, “Automatically select the certificate store based on the type of certificate” is highlighted and click Next.



- v. Click Finish

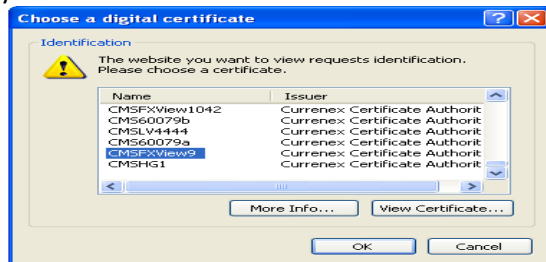


- vi. You are done with the import process and now it is time to login to the platform.

2. Click on the following link to log on: **MAKE SURE YOU ARE USING INTERNET EXPLORER**

a. <http://pret.currenex.com>

- b. The pop-up box with your certificate in it should pop up. Please make sure you select your certificate and hit ok.



- c. Use your login information in your email and login.

Application Login

Login to your trading application:

Name:

Password: